

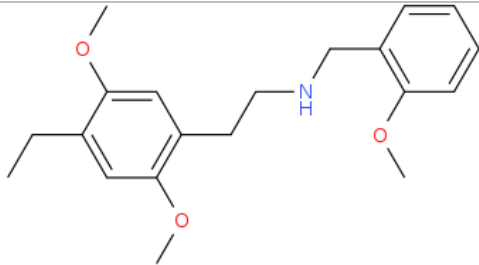
## ANALYTICAL REPORT

### 25E-NBOMe (C<sub>20</sub>H<sub>27</sub>N<sub>3</sub>)

#### 2-(4-ethyl-2,5-dimethoxyphenyl)-N-(2-methoxybenzyl)ethan-1-amine

Remark – other active cpd. detected: **none**

Sample ID:	1611-16
Sample description:	powder - white
Sample type:	RM-reference material
Comments <sup>1</sup> :	CAY Lot#0451918-50; RESPONSE -purchasing
Date of entry:	7/19/2016

Substance identified-structure <sup>2</sup> (base form)	
Systematic name:	2-(4-ethyl-2,5-dimethoxyphenyl)-N-(2-methoxybenzyl)ethan-1-amine
Other names:	2C-E-NBOMe; NBOMe-2C-E
Formula (per base form)	C <sub>20</sub> H <sub>27</sub> N <sub>3</sub>
M <sub>w</sub> (g/mol)	329.44
Salt form:	HCl
StdInChIKey	PXDVGFGXPVCNAB-UHFFFAOYSA-N
Compound Class	Phenethylamines
Other active cpd. detected	none
Add.info (purity..)	98 %

<sup>1</sup> This report has been produced with the financial support of the Prevention of and fight against crime Programme of the European Union (grant agreement number JUST/2013/ISEC/DRUGS/AG/6413). The contents of this report are the sole responsibility of the National Forensic Laboratory and can in no way be taken to reflect the views of the European Commission.

<sup>2</sup> Created by OPSIN free tool: <http://opsin.ch.cam.ac.uk/> DOI: 10.1021/ci100384d



## Report updates

date	comments (explanation)

## Supporting information

Analytical technique:	applied	remarks
GC-MS (EI ionization)	+	NFL GC-RT (min): 9.69 BP(1): 121; BP(2): 91, BP(3): 150,
FTIR-ATR	+	direct measurement
GC-IR (condensed phase)	+	always as base form

**1. GC-MS (Agilent):** GC-method is RT locked to tetracosane (9.258 min). Injection volume 1 ml and split mode (1:50). Injector temperature: 280 °C. Chromatographic separation: on column HP1-MS (100% dimethylpolysiloxane), length 30 m, internal diameter 0.25 mm, film thickness 0.25 µm. Carrier gas He: flow-rate 1.2 ml/min. GC oven program: 170 °C for 1 min, followed by heating up to 190 °C at rate 8 °C/min, then heating up to 293 °C at a rate of 18 °C/min, hold for 6.1 min, then heating at 50 °C/min up to 325 °C and finally 6.1 min isothermal. MSD source EI = 70 eV. GC-MS transfer line T= 235 °C, source and quadrupole temperatures 280 °C and 180 °C, respectively. Scan range m/z scan range: from 50 (30 until 6 min.) to 550 (300 until 6 min) amu.

**2. FTIR-ATR (Perkin Elmer):** scan range 4000-400 cm<sup>-1</sup>; resolution 4cm<sup>-1</sup>

**3. GC- (MS)-IR condensed phase (GC-MS (Agilent) & IR (Spectra analyses-Danny)**

GC-method: Injection volume 1 ml and split mode (1:5). Injector temperature 280 °C. Chromatographic separation as above (1). Split MS : IR = 1 : 9.

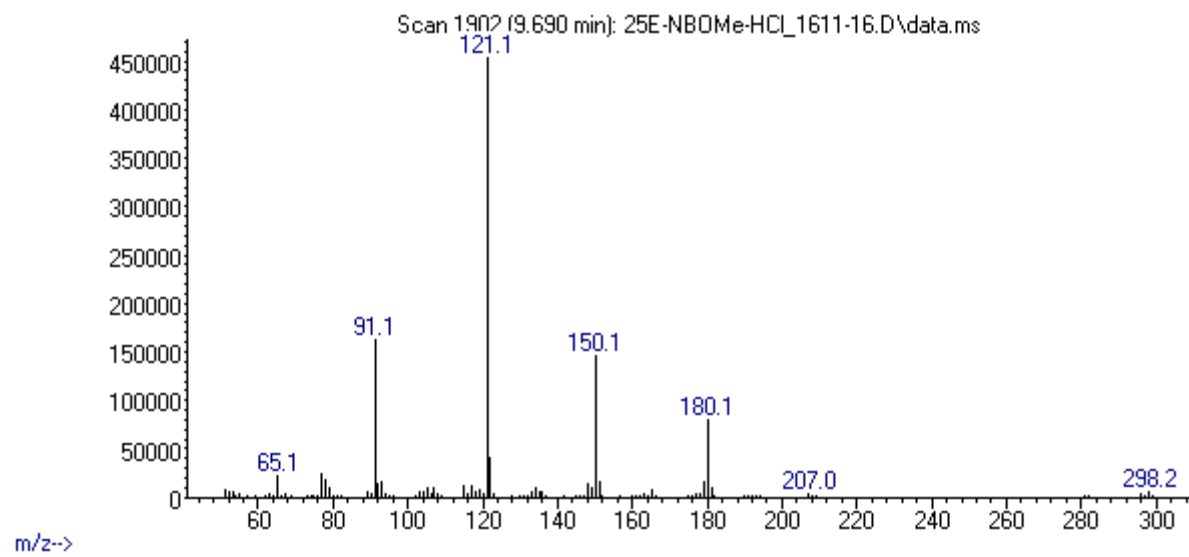
MSD source EI = 70 eV. GC-MS transfer line T= 235 °C, source and quadrupole temperatures 280 °C and 180 °C, respectively. Scan range m/z scan range: from 50 (30 until 6 min.) to 550 (300) amu.

IR (condensed (solid) phase): IR scan range 4000 to 650, resolution 4 cm<sup>-1</sup>.

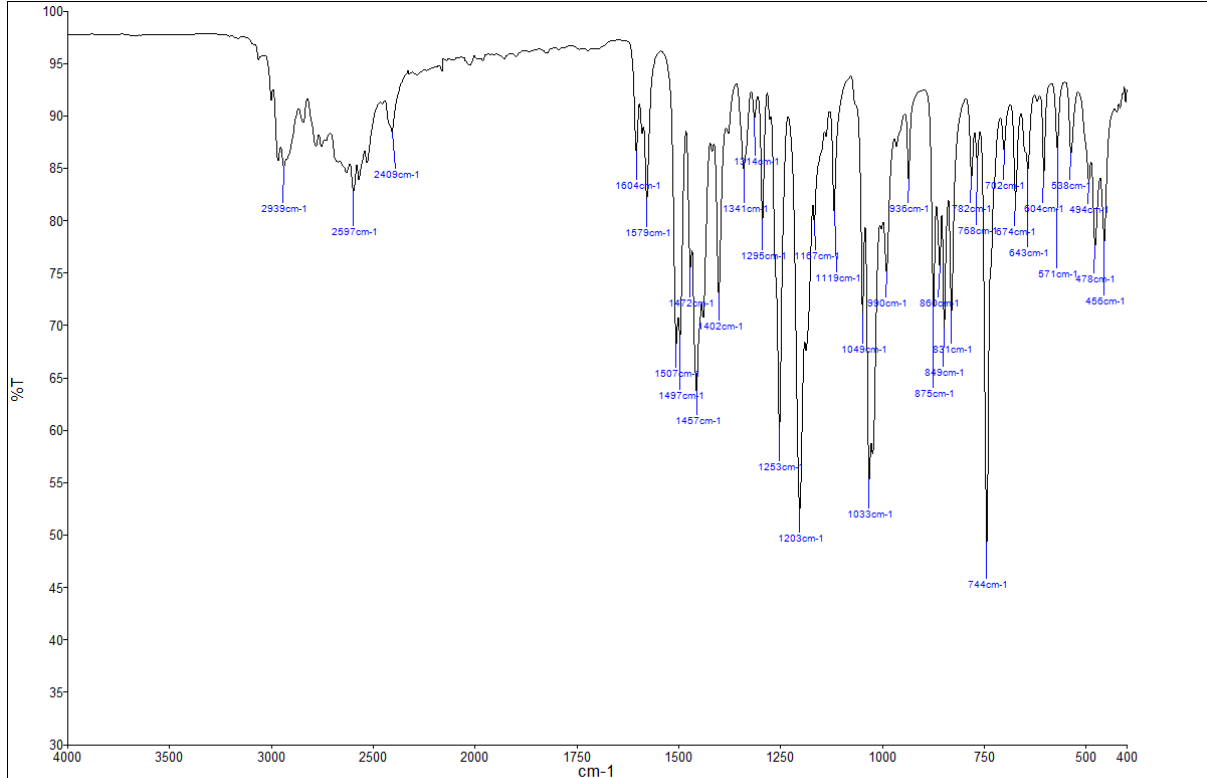
# FIGURES OF SPECTRA

MS (EI)

Abundance

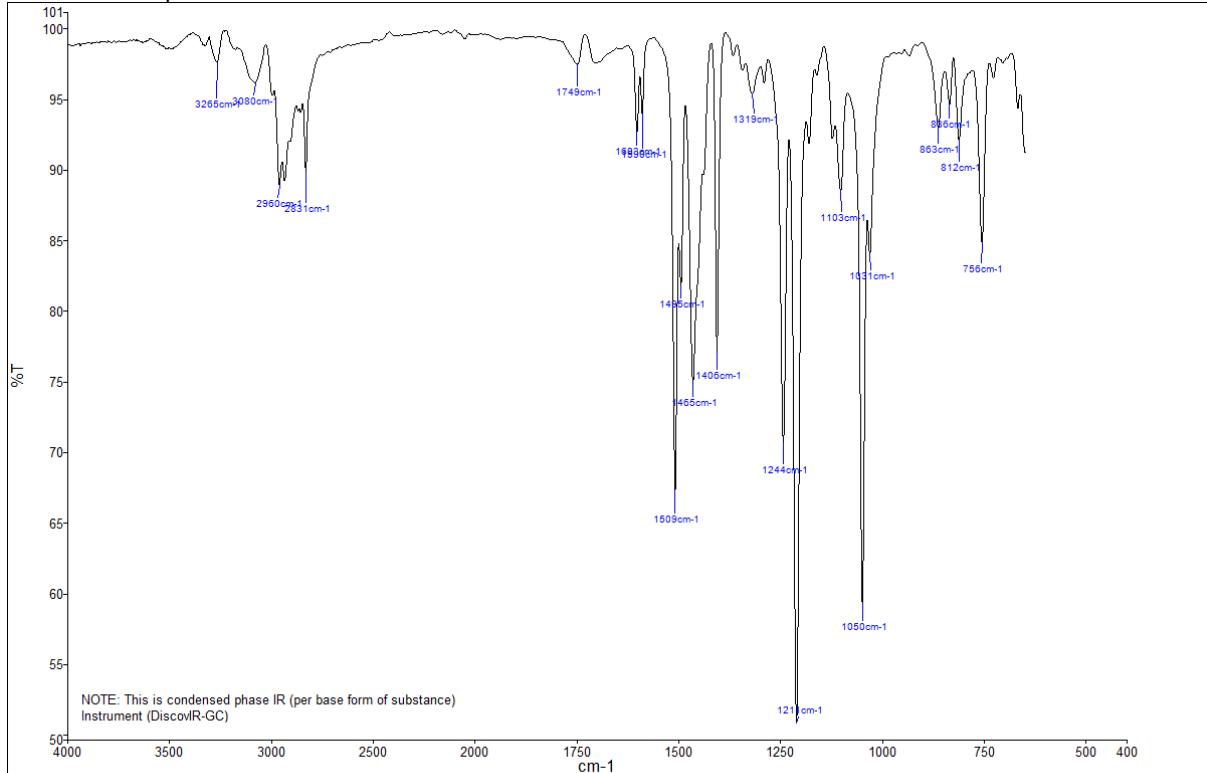


FTIR-ATR



Name	Description
25E-NBOMe-HCL_1611-16_CAY_IR-A	ID:1611-16; 2-(4-ethyl-2,5-dimethoxyphenyl)-N-(2-methoxybenzyl)ethan-1-amine-HCL_Lot#0451918-50

IR-Condensed phase



Name	Description
25E-NBOMe_HCL_1611-16_CAY_IR-C.spc	Sample_ID:1611-16; 2-(4-ethyl-2,5-dimethoxyphenyl)-N-(2-methoxybenzyl)ethan-1-amine-HCL_Lot#0451918-50